

CONSTRUCTION PLANS

PARKER SPORTS COMPLEX - PHASE 1

PREPARED FOR:

CITY OF PARKER, FLORIDA

FEMA DISASTER # 4399DR

CITY COUNCIL

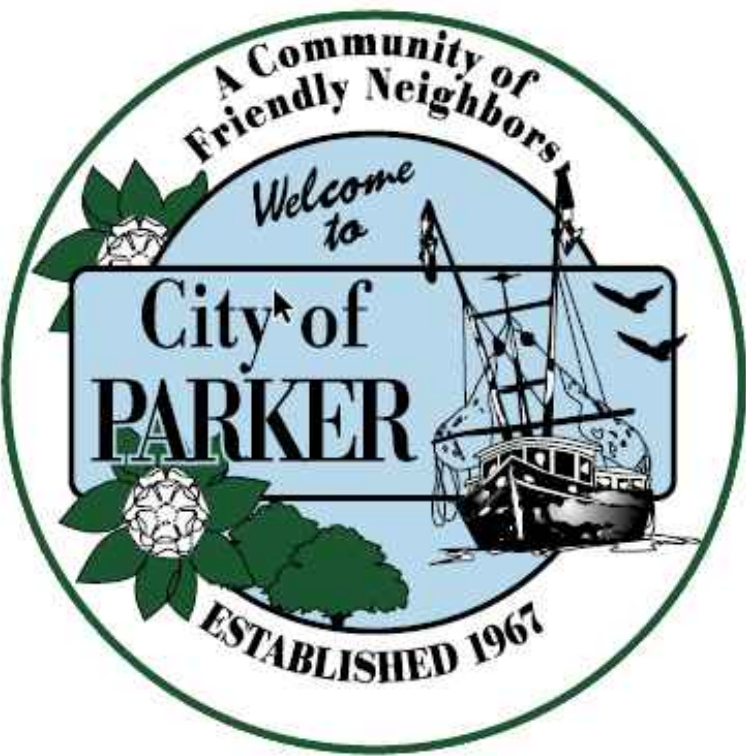
MAYOR, ANDREW KELLY

COUNCIL MEMBER/MAYOR PRO-TEM, TONYA BARROW

COUNCIL MEMBER, RONALD H. CHAPLE

COUNCIL MEMBER, STACIE GALBREATH

COUNCIL MEMBER, APRIL L. GIBSON

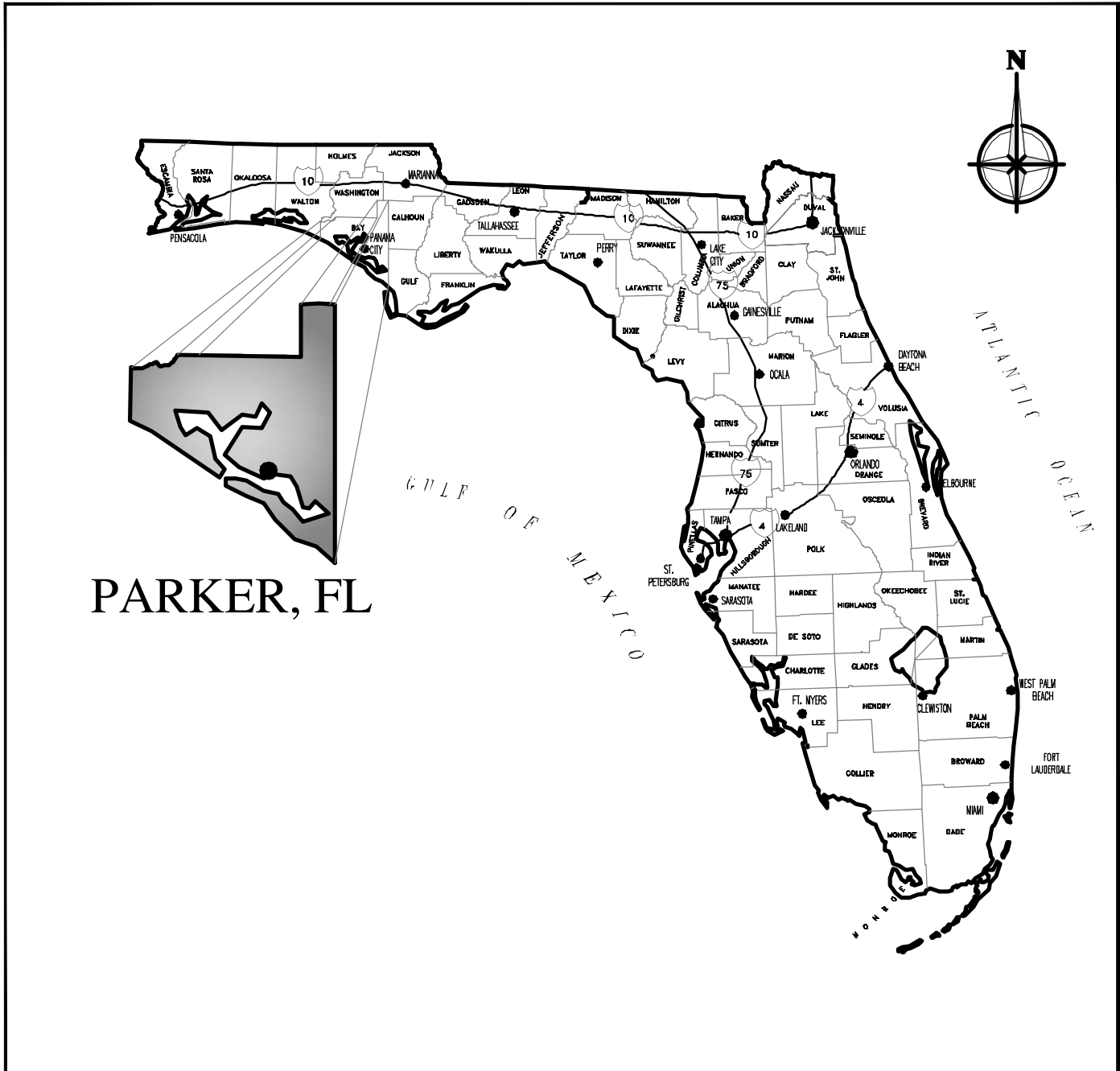


CERTIFICATE OF AUTHORIZATION No.: 31422

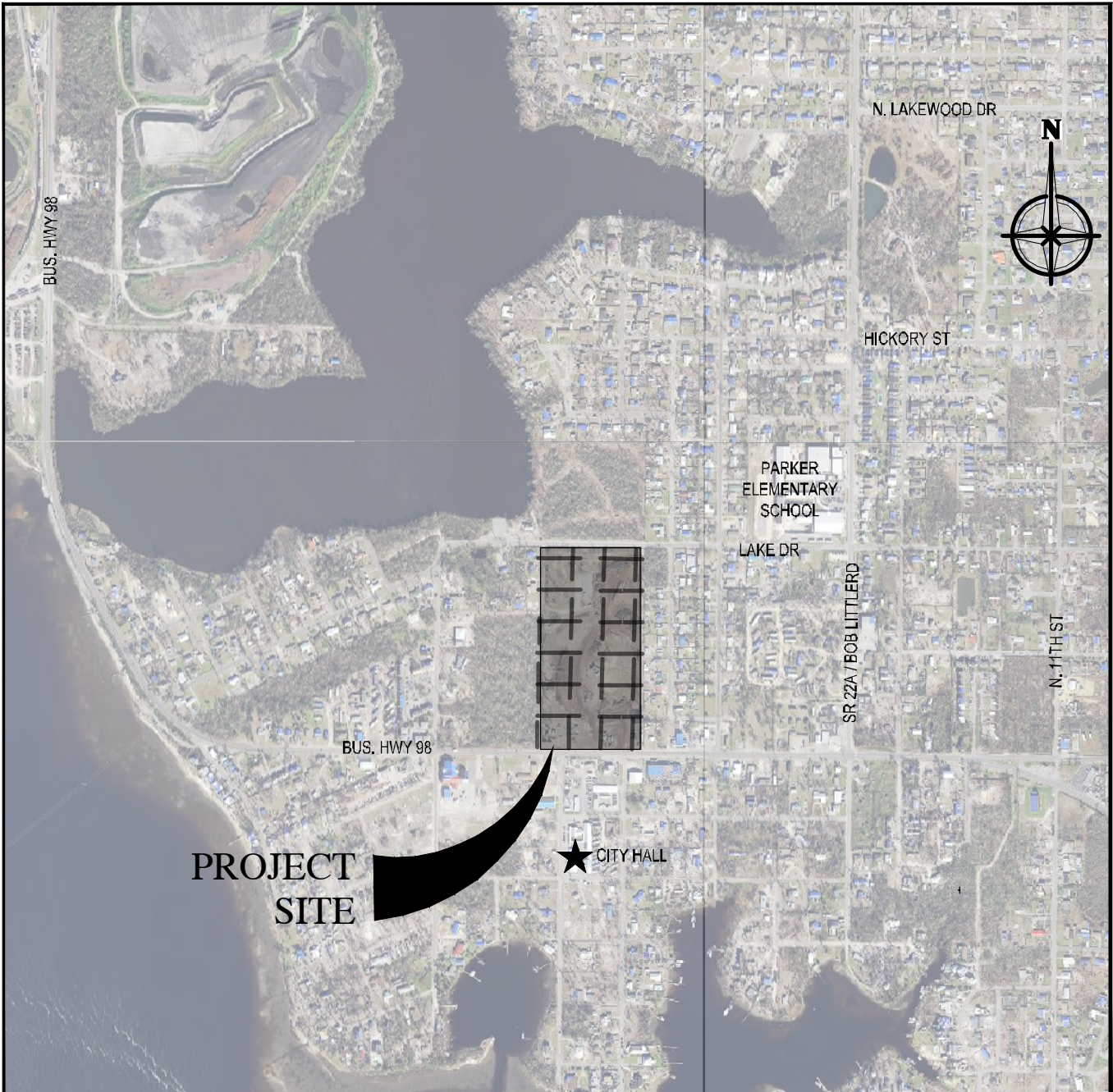
ELIZABETH S. MOORE, P.E. No.: 57607

THE ABOVE NAMED PROFESSIONAL ENGINEER SHALL
BE RESPONSIBLE FOR THE FOLLOWING SHEETS IN
ACCORDANCE WITH RULE 61G15-23.005, F.A.C.

VICINITY
MAP



LOCATION
MAP



INDEX OF SHEETS

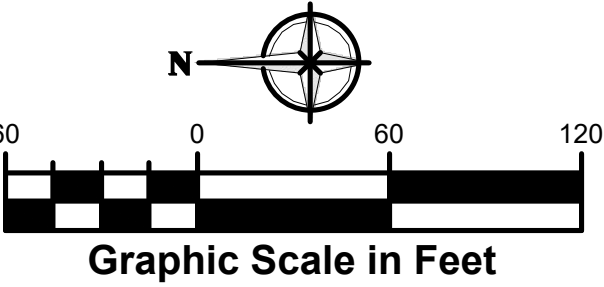
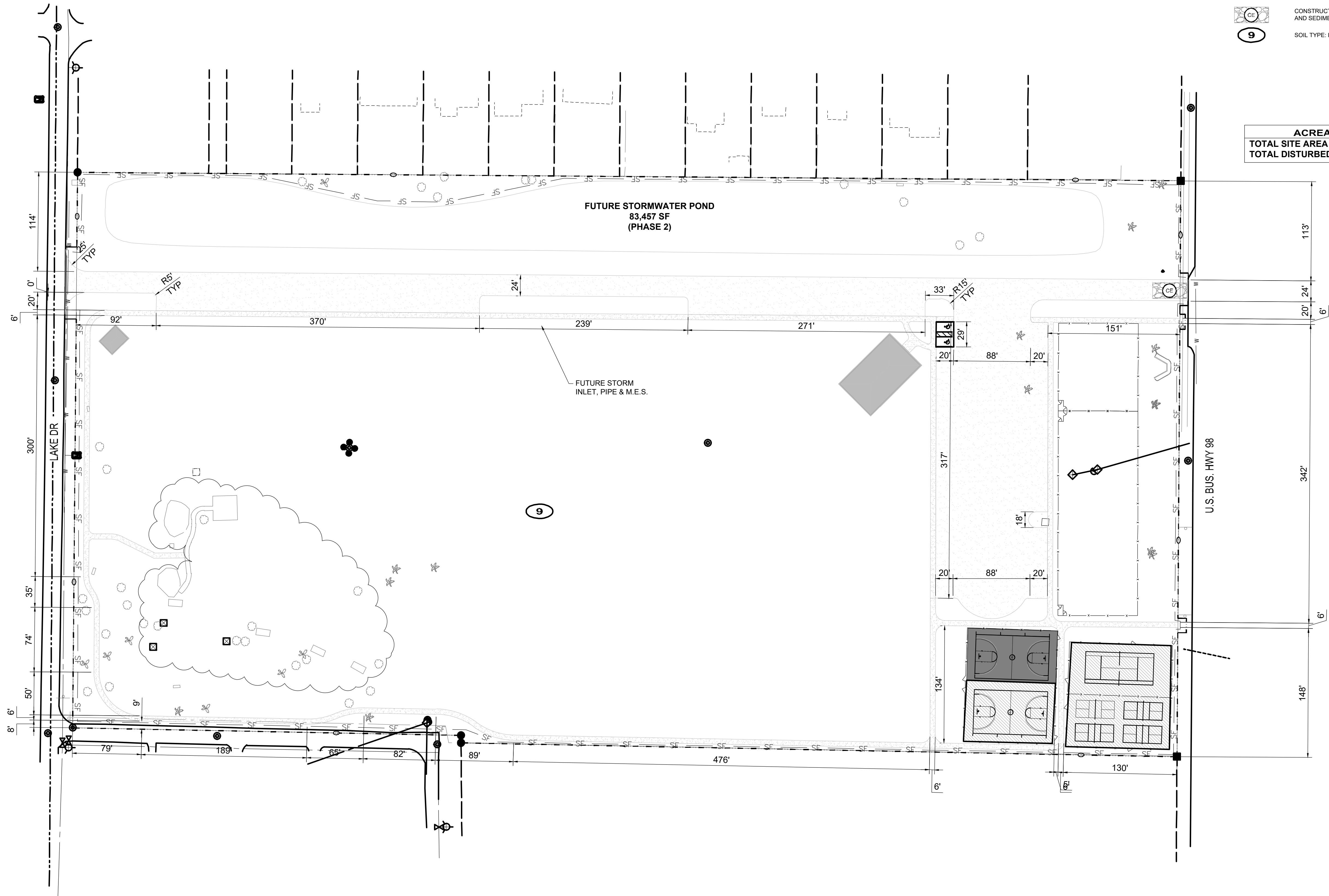
C0.0	COVER SHEET
1 OF 1	SURVEY
C0.1	STORMWATER POLLUTION PREVENTION PLAN
C0.2	STORMWATER POLLUTION PREVENTION DETAILS
C1.0	EXISTING SITE PLAN & DEMOLITION PLAN
C1.1	SITE COORDINATE PLAN
C1.2	SITE IMPROVEMENT PLAN
C1.3	SITE GRADING & DRAINAGE PLAN
C1.4	SITE UTILITIES PLAN
C2.0	TENNIS AND BASKETBALL COURT DETAILS
C3.0	CONSTRUCTION DETAILS
C3.1	CONSTRUCTION DETAILS
C3.2	STANDARD DETAILS

THIS ITEM HAS BEEN DIGITALLY SIGNED AND SEALED BY:



PRINTED COPIES OF THIS DOCUMENT ARE NOT
CONSIDERED SIGNED AND SEALED AND THE SIGNATURE
MUST BE VERIFIED ON ANY ELECTRONIC DOCUMENTS.

DATE: 5/19/2022



LEGEND:

- LIMITS OF DISTURBANCE
- SILT FENCE PER STATE OF FLORIDA EROSION AND SEDIMENT CONTROL MANUAL (LATEST EDITION)
- INLET PROTECTION
- CONSTRUCTION ENTRANCE PER STATE OF FLORIDA EROSION AND SEDIMENT CONTROL MANUAL (LATEST EDITION)
- SOIL TYPE: LAKELAND SAND, 0 to 5 PERCENT SLOPES

ACREAGE SUMMARY	
TOTAL SITE AREA	18.82 AC.
TOTAL DISTURBED AREA	18.85 AC.



This item has been electronically signed and sealed by ELIZABETH S. MOORE, PE, dated 10/20/2021. Printed copies of this document must be signed, sealed, and the signature must be verified on any electronic copies.

Elizabeth S. Moore, PE
FL License No.: 57607

No.	Date	Revision

Designed: H. DAVIS
 Drawn: B. SILCOX
 Checked: E. MOORE
 Job No.: 1620-016
 Date: 10/2021

STORMWATER POLLUTION PREVENTION PLAN

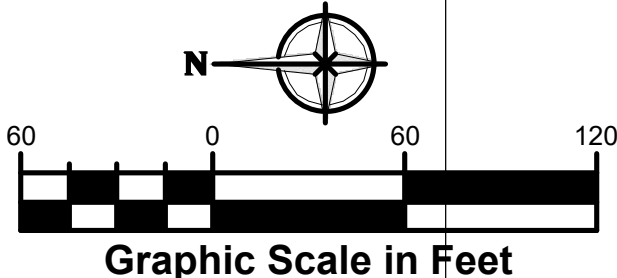
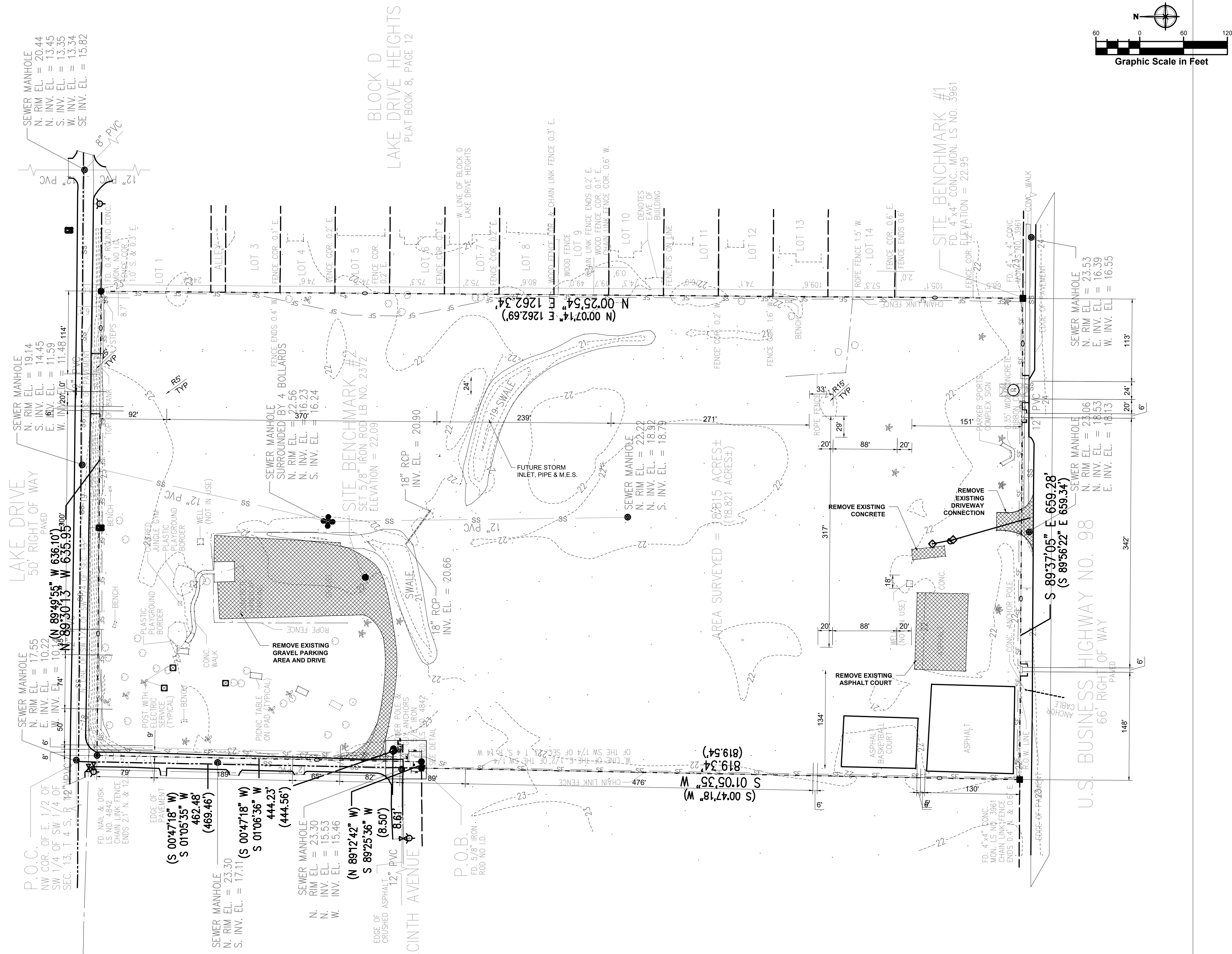
**SPORTS PARK COMPLEX
PHASE 1**

CITY OF PARKER, BAY COUNTY, FLORIDA

THIS SHEET NOT VALID FOR CONSTRUCTION WITHOUT COMPLETE SET OF PLANS.

Sheet No.
CO.1





EXISTING SITE PLAN & DEMOLITION PLAN

SPORTS PARK COMPLEX

PHASE 1

CITY OF PARKER, BAY COUNTY, FLORIDA

THIS SHEET NOT VALID FOR
CONSTRUCTION WITHOUT
COMPLETE SET OF PLANS.

Sheet No.
C1.0

This item has been electronically signed and sealed by
ELIZABETH S. MOORE, PE
on May 19, 2022
using a digital signature.
Printed copies of this document are not considered signed and sealed and the signature must be verified on any electronic copies.

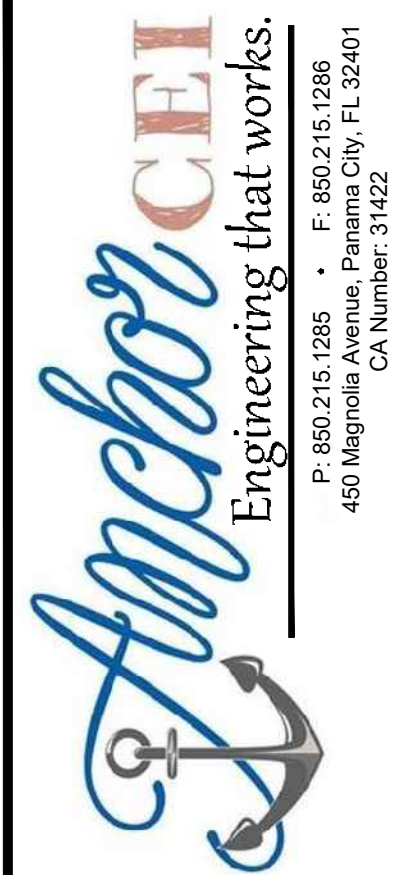
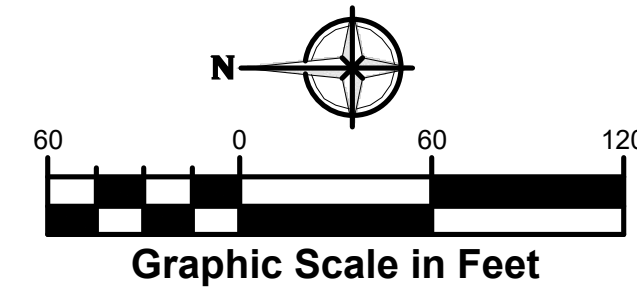
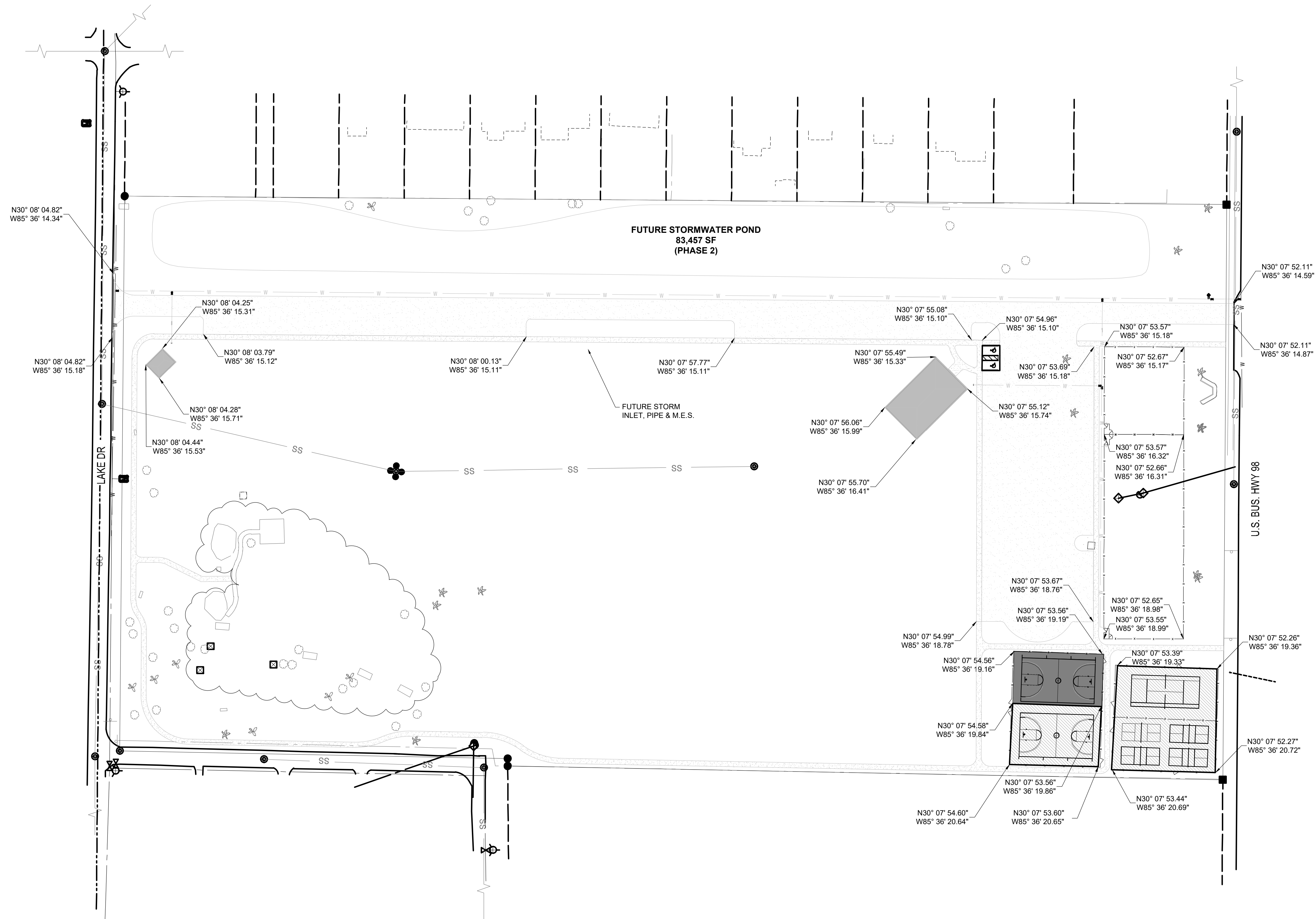
Elizabeth S. Moore, PE
FL License No.: 57607

		No.	Date	Revision
	A			
	B			
	C			
	D			
	E			
	F			
	G			
	H			
	I			
	J			
	K			
	L			
	M			
	N			
	O			
	P			
	Q			
	R			
	S			
	T			
	U			
	V			
	W			
	X			
	Y			
	Z			

Designed:	H. DAVIS
Drawn:	B. SILCOX
Checked:	E. MOORE
Job No.:	1620-016
Date:	10/2021

Anchor **CCL**
Engineering that works

P: 850.215.1285 • F: 850.215.1286
4550 Magnolia Avenue, Panama City,
FL 32409
CA Number: 31422



This item has been electronically signed and sealed by ELIZABETH S. MOORE, PE using a digital signature. Printed copies of this document are not valid. The signature must be sealed and the signature must be verified on any electronic copies.

Elizabeth S. Moore, PE
FL License No.: 57607

No.	Date	Revision
1		
2		
3		
4		
5		
6		
7		
8		
9		
10		

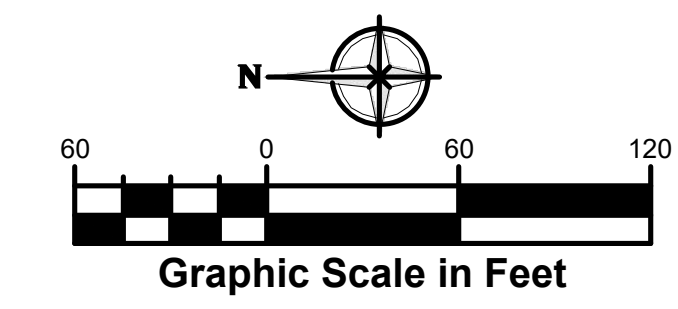
Designed: H. DAVIS
Drawn: B. SILCOX
Checked: E. MOORE
Job No.: 1620-016
Date: 10/2021


COORDINATE SITE PLAN

**SPORTS PARK COMPLEX
PHASE 1**

CITY OF PARKER, BAY COUNTY, FLORIDA

THIS SHEET NOT VALID FOR
CONSTRUCTION WITHOUT
COMPLETE SET OF PLANS.



 **Anchor** **CEI**
Engineering that works.

P: 850.215.1285 • F: 850.215.1286
450 Magnolia Avenue, Panama City, FL 32401
CA Number: 31422

This item has been electronically signed and sealed by
ELIZABETH S. MOORE, PE
on May 19, 2022
using a digital signature.

Printed copies of this document are not considered signed and sealed and the signature must be verified on any electronic copies.

Elizabeth S. Moore, PE
FL License No.: 57607

SITE IMPROVEMENT PLAN

SPORTS PARK COMPLEX

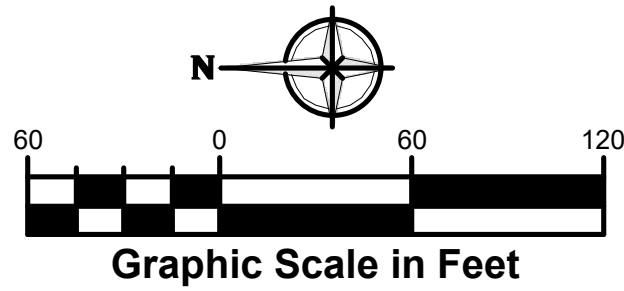
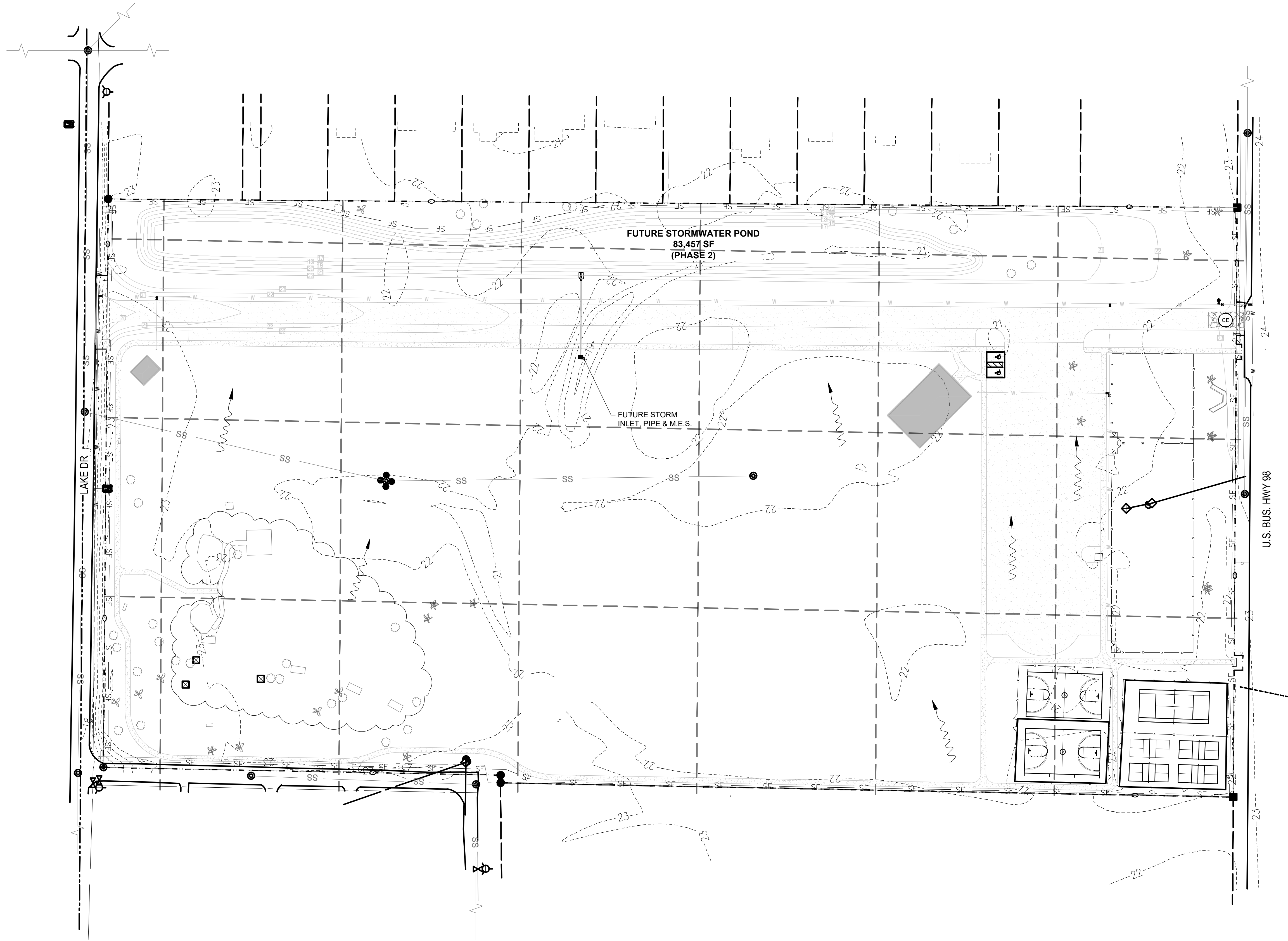
PHASE 1

CITY OF PARKER, BAY COUNTY, FLORIDA

THIS SHEET NOT VALID FOR
CONSTRUCTION WITHOUT
COMPLETE SET OF PLANS.

Sheet No.
C1.2

Sunshine811
Call 811 or www.sunshine811.com two full business days before digging to have utilities located and marked.
(Check positive response codes before you dig.)



SITE GRADING & DRAINAGE PLAN

**SPORTS PARK COMPLEX
PHASE 1**

CITY OF PARKER, BAY COUNTY, FLORIDA

THIS SHEET NOT VALID FOR
CONSTRUCTION WITHOUT
COMPLETE SET OF PLANS.

Sheet No.
C1.3

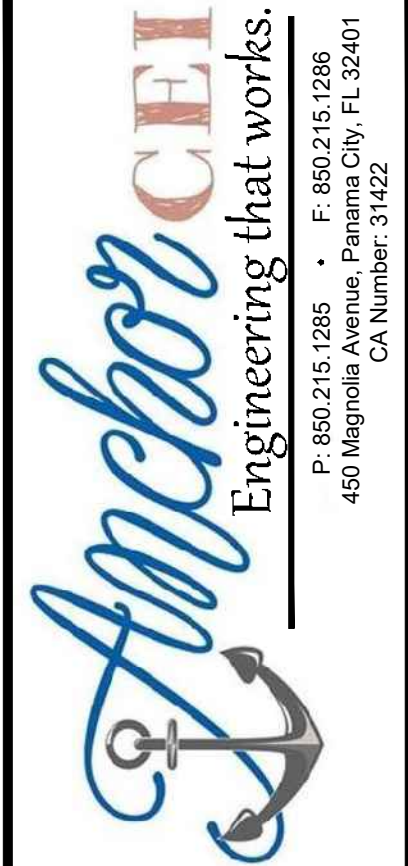
Designed: H. DAVIS
Drawn: B. SILCOX
Checked: E. MOORE
Job No.: 1620-016
Date: 10/2021

No.	Date	Revision
1		
2		
3		
4		
5		
6		
7		
8		
9		
10		

This item has been electronically
signed and sealed by
ELIZABETH S. MOORE, PE
on 10/20/2021 at 10:00 AM.
Printed copies of this document
must be signed and sealed by the
designer and the signature must be
verified on any electronic copies.
Elizabeth S. Moore, PE
FL License No.: 57607

Anchor CEI
Engineering that works
P: 850.215.1285 • F: 850.215.1286
450 Magnolia Avenue, Panama City, FL 32401
CA Number: 31422

Sunshine
Call 811 or www.sunshine11.com two full
business days before digging to have all lines
located and marked.
(These services are required under state law.)

[illegible]

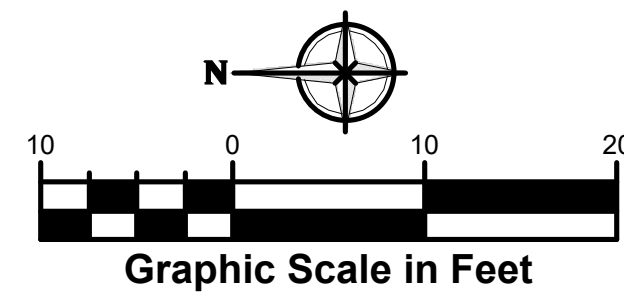
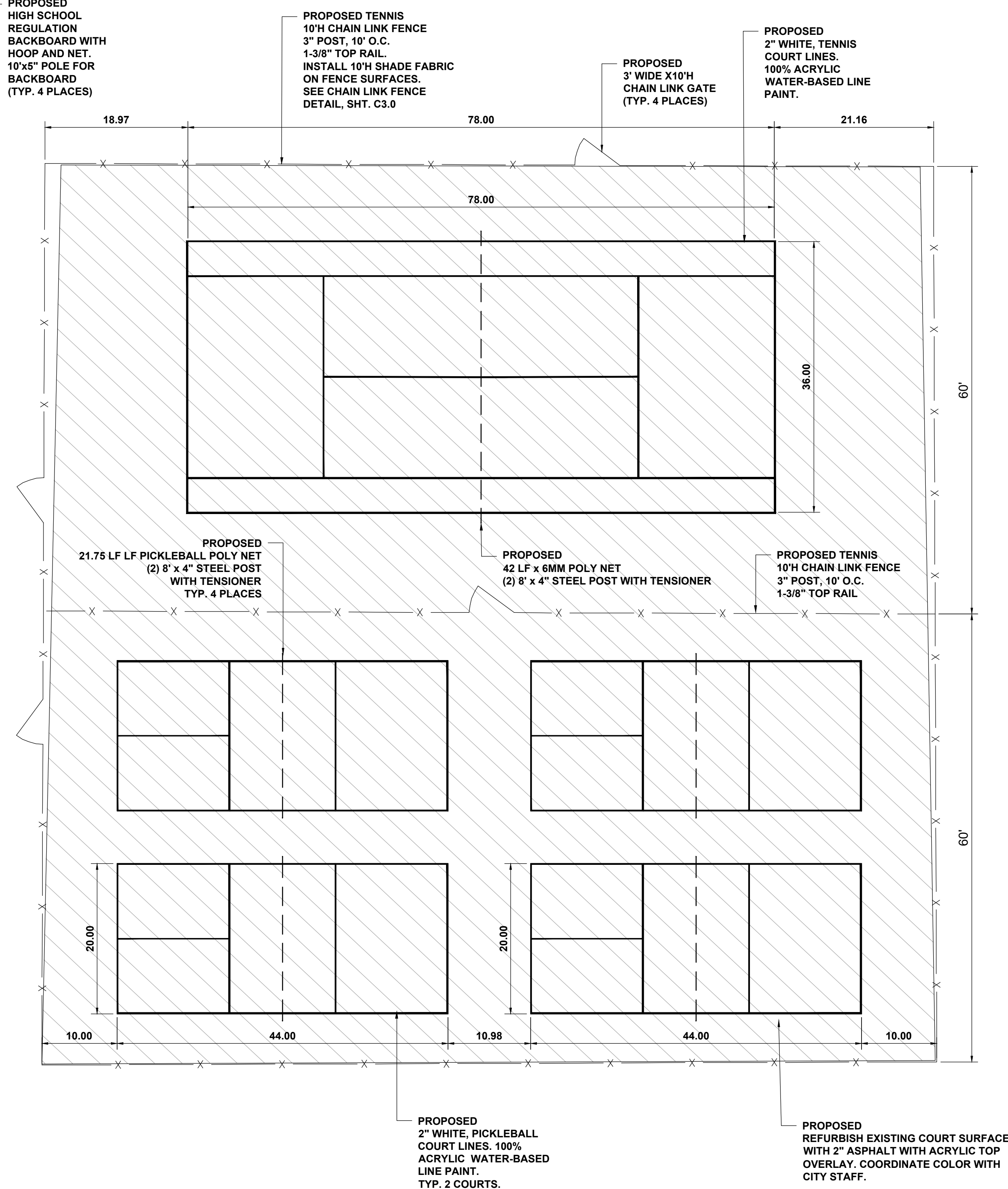
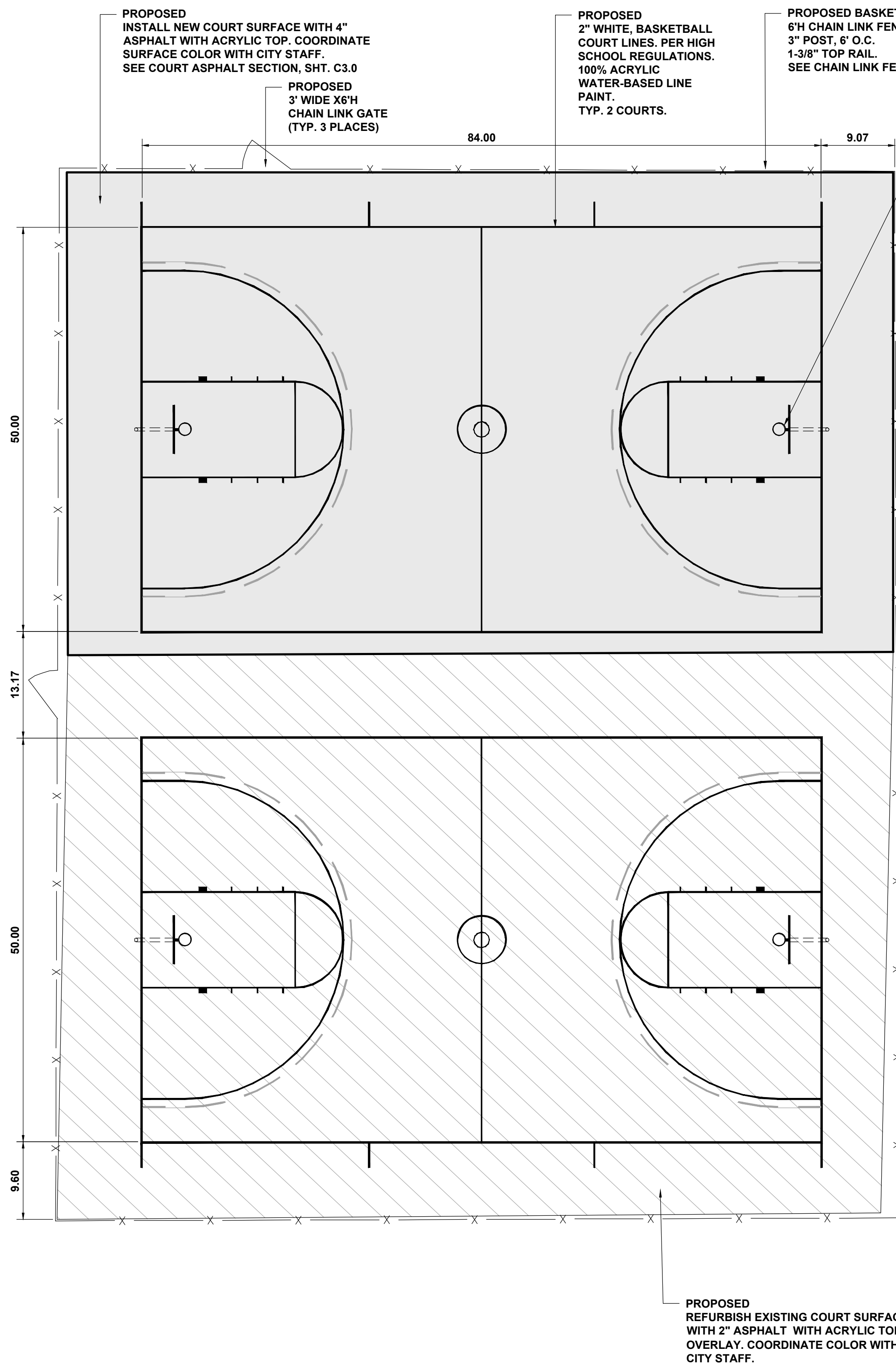
SITE UTILITIES PLAN

**SPORTS PARK COMPLEX
PHASE 1**

CITY OF PARKER, BAY COUNTY, FLORIDA

Sheet No.
C1.4





This item has been electronically signed and sealed by ELIZABETH S. MOORE, PE on 10/20/21. Printed copies of this document must be signed, sealed, and the signature must be verified on any electronic copies.

Elizabeth S. Moore, PE
FL License No.: 57607

No.	Date	Revision
1		
2		
3		
4		
5		
6		
7		
8		
9		
10		

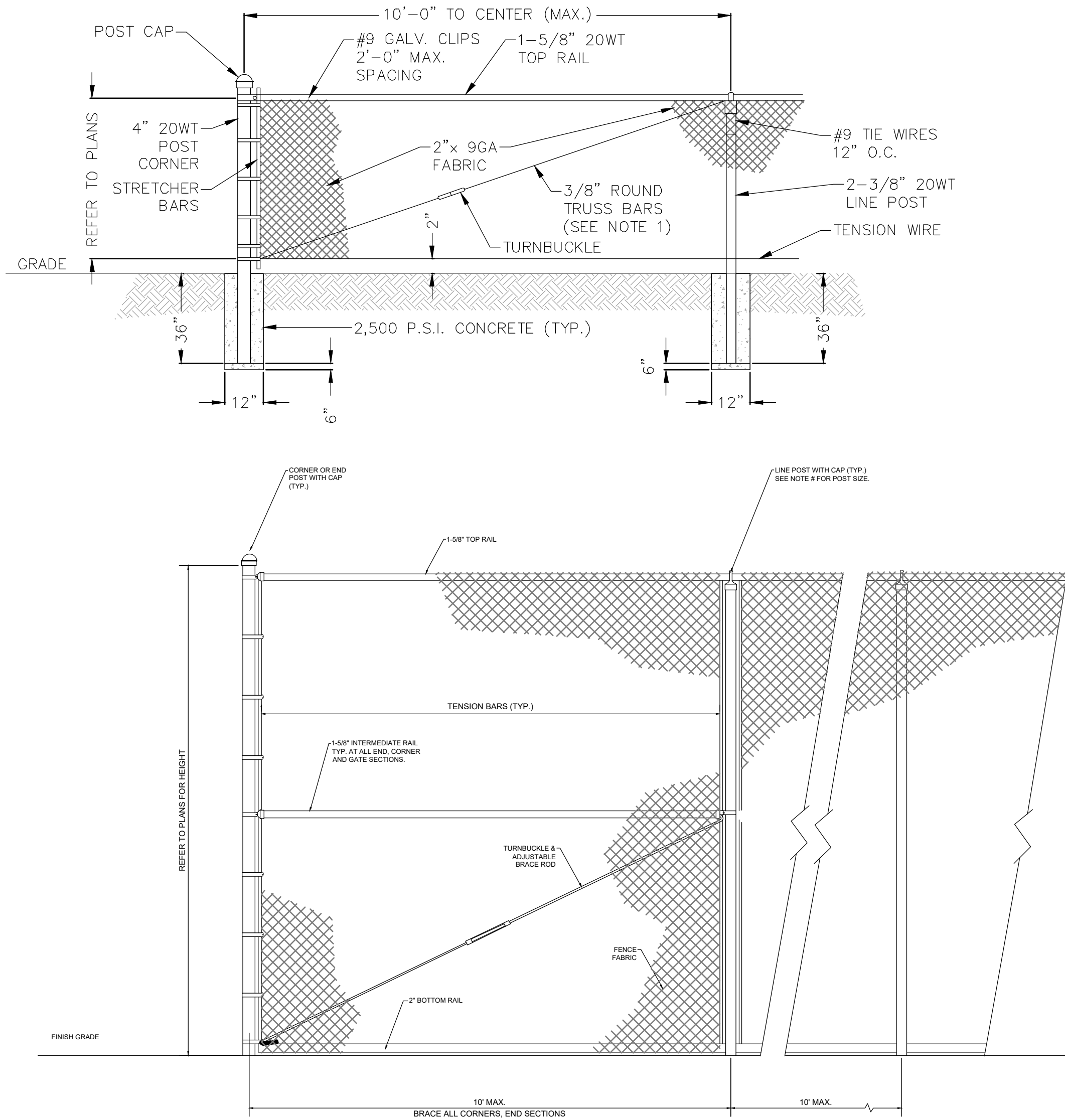
Designed: H. DAVIS
Drawn: B. SILCOX
Checked: E. MOORE
Job No.: 1620-016
Date: 10/2021

TENNIS and BASKETBALL COURT
SITE PLAN

**SPORTS PARK COMPLEX
PHASE 1**

CITY OF PARKER, BAY COUNTY, FLORIDA

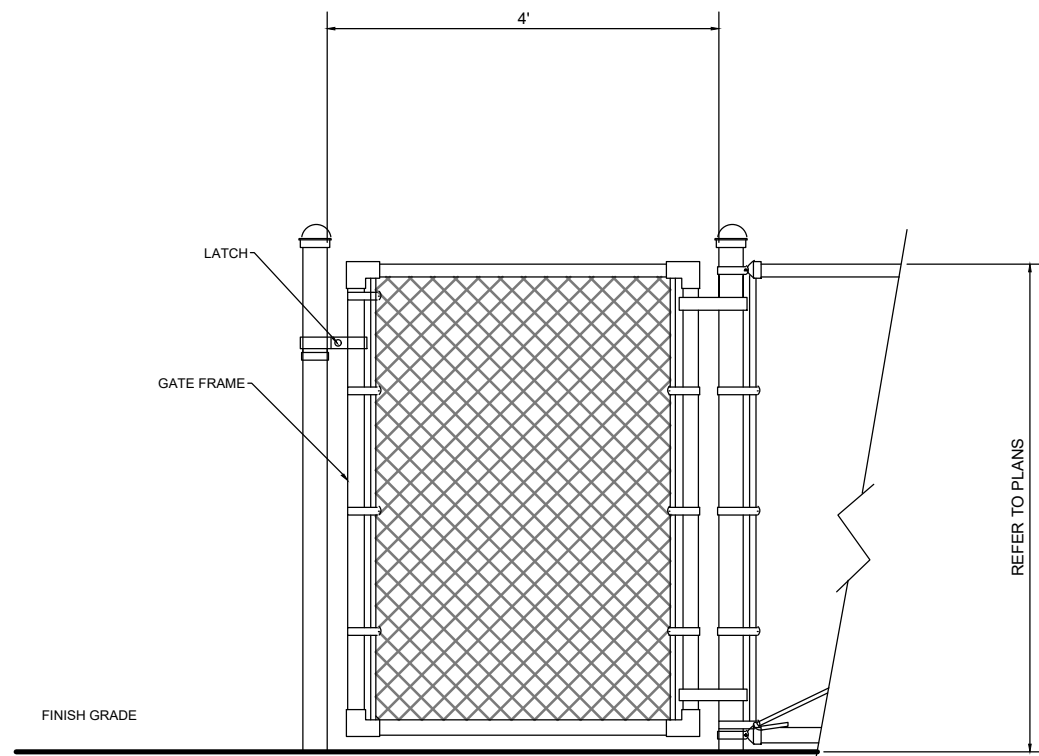
THIS SHEET NOT VALID FOR
CONSTRUCTION WITHOUT
COMPLETE SET OF PLANS.



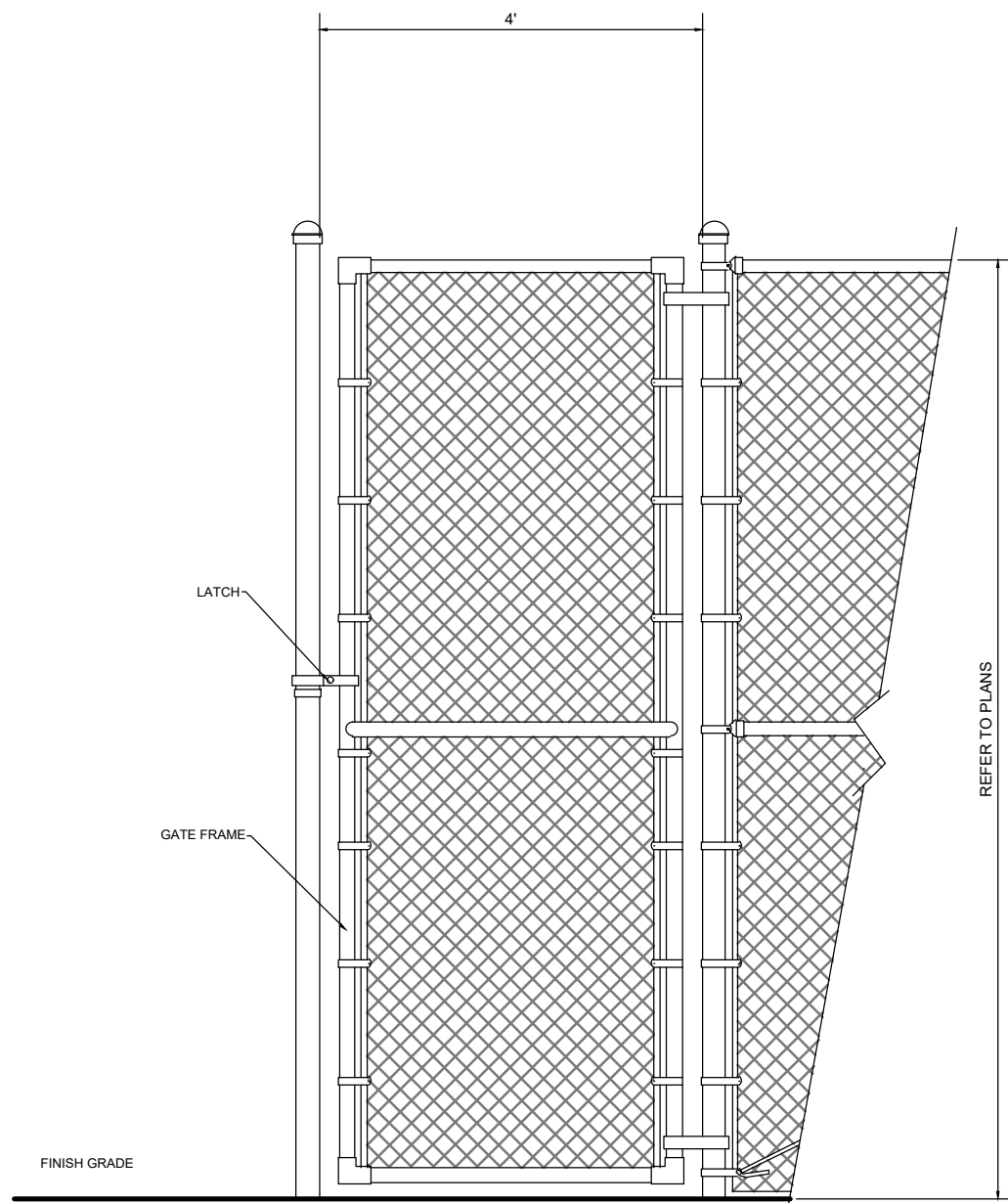
FENCE DETAIL

CHAIN LINK FENCE DETAIL

NOT TO SCALE



WALK-THROUGH GATE DETAIL



- NOTES:
- CHAIN LINK FENCE FABRIC SHALL BE 2-INCH MESH, GALVANIZED WITH BLACK VINYL COATING.
 - ATTACH FABRIC TO RAILS AND POSTS WITH SELF-LOCKING FABRIC BANDS.
 - FLAT ALUMINUM RIVE BRACKS WITH BLACK POWDER COATING.
 - FRAMING SHALL BE SCHEDULE 40 ROUND GALVANIZED STEEL PIPE WITH BLACK VINYL COATING.
 - FENCING HEIGHT LESS THAN 6 FEET SHALL USE 2-1/2" CORNER AND END POSTS WITH 2-1/2" LINE POSTS.
 - FENCING 6 FEET TO 10 FEET SHALL USE 3" CORNER AND END POSTS WITH 2-1/2" LINE POSTS.

No.	Date	Revision
1		
2		
3		
4		
5		
6		
7		
8		
9		
10		

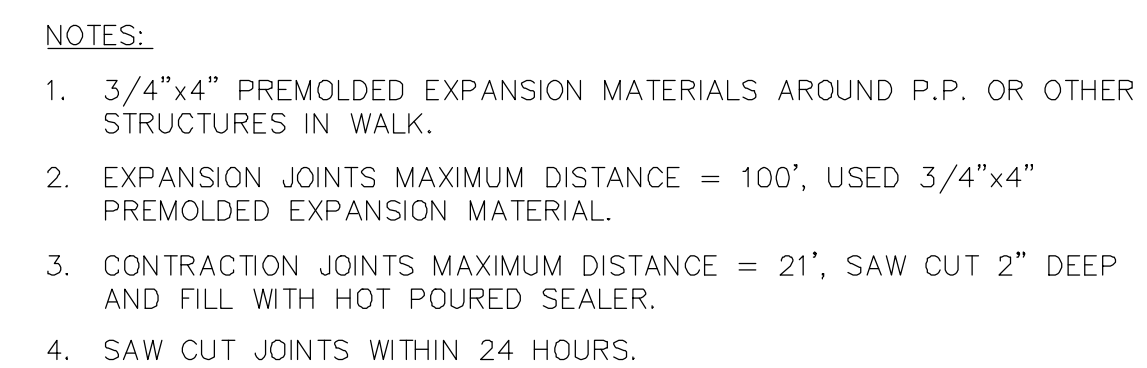
Designed: H. DAVIS
Drawn: B. SILCOX
Checked: E. MOORE
Job No.: 1620-016
Date: 10/2021

CONSTRUCTION DETAILS

**SPORTS PARK COMPLEX
PHASE 1**

CITY OF PARKER, BAY COUNTY, FLORIDA

THIS SHEET NOT VALID FOR CONSTRUCTION WITHOUT COMPLETE SET OF PLANS.



ALTERNATE CONCRETE SIDEWALK DETAIL



									No.	Date	Revision
A	B	C	D	E	F	G	H	I	J	K	L
									Designed: H. DAVIS		
									Drawn: B. SILCOX		
									Checked: E. MOORE		
									Job No.: 1620-016		
									Date: 10/2021		

CONSTRUCTION DETAILS

**SPORTS PARK COMPLEX
PHASE 1**
CITY OF PARKER, BAY COUNTY, FLORIDA

THIS SHEET NOT VALID FOR
CONSTRUCTION WITHOUT
COMPLETE SET OF PLANS.

Sheet No.
C3.1

